

NCHRP 20-44(26) Demo Project Ottawa County Road Commission (MI) Microsurfacing

Project Overview

Arthur St E is a rural county primary road with an ADT of 200 to 500 near Coopersville, MI. This 2 mile section was crack sealed in 2018. Some of the crack sealant exhibited minor aging, and there were a few instances of minor cracking that have occurred since the crack seal was applied. It was decided to proceed without additional crack seal treatment so that we could monitor the effects on micro surfacing of treated and untreated distresses in the roadway. The project also compares and will monitor micro surfacing at application rates of 18#'s per square yard and 24#'s per square yard. The total project was 12,075 square yards.

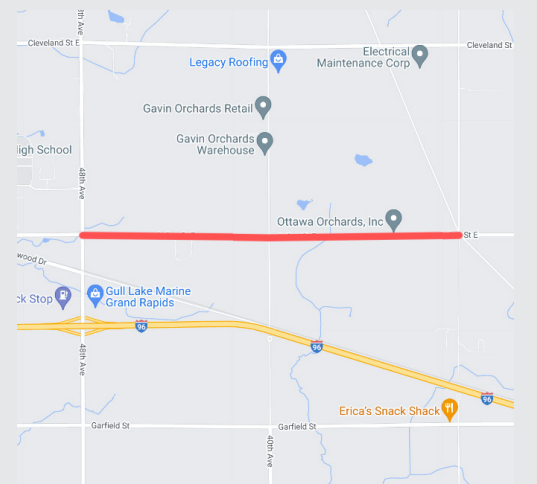


These sections of roadway received a two course overlay in 2017 at a composite thickness of 3". The agency had recently rated the section with a PASER rating of 7. Comparing it to data and pictures from RoadResource.org, I rate the road as an A-/B or in number at 85.

The trial project executed very well. Coordination of all participants was exceptional, and the efficiency and professionalism of American Pavements, Inc. was excellent. The agency has continued to monitor and document the condition of the sections over time since the application.

Project Details At-a-Glance

| | |
|---------------------------|---|
| Agency: | Ottawa County Road Commission |
| Route/Location: | Arthur St E from 48th Ave to 32nd Ave in Coopersville, MI |
| Area/Length: | 12,075 SY |
| Pre-Condition: | PASER rating of 7 |
| Completion Date: | September 2020 |
| Materials: | CSS-1hM (emulsion) ETF / Michigan mix (micro) |
| Application Rates: | 18 LB/SY / 22 LB/SY |
| Weather: | 55°F - 57°F, 76% - 78% humidity, clear and sunny |





Pre-construction condition of Arthur St E at 32nd Ave



Pre-construction condition of Arthur St E between 48th and 40th Ave



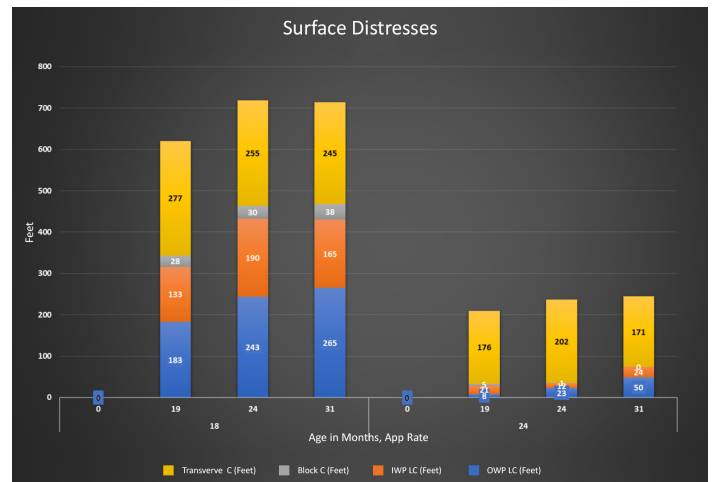
Final cleaning of the surface prior to application



Application completed on one half of the roadway



Aged roadway 31 months after application



Cumulative distress data chart